



AUTISM COMMUNITIES
Housing Guide
Long Island, NY



STEP 1

ENROLL IN NYS OPWDD'S SELF DIRECTION PROGRAM

OPWDD's Self Direction program allows individuals to choose their services to best fit their needs. This includes housing, staffing and activities. You will attend a self-direction information session and then meet with your/your loved one's circle about budget and needs.



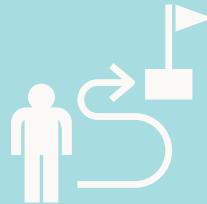
STEP 2

GATHER YOUR RESOURCES AND INFORM YOUR CIRCLE MEMBERS

Inform circle members about your interest in living independently and gather their contact information.

This can include your/your loved one's:

- Self Direction Broker
- Care Manager
- Fiscal Intermediary
- Close Relatives/Friends



STEP 3

FILL OUT THE AUTISM COMMUNITIES INFORMATION FORM AND CONNECT

Our Information Form helps us gather basic information about your/your loved one's needs. Please review all of our candidate housing criteria before filling out the form. After filling out our information form, a member of the Autism Communities team will reach out to you directly.



STEP 4

PREPARE TO CONNECT WITH SMILE & REVIEW OF SELF DIRECTION DOCUMENTATION



If Autism Communities determines you/your loved one is a potential housing candidate, you will be connected with SMILE. SMILE conducts all Autism Communities person centered housing planning meetings with candidates. You will take part in an initial Zoom call, and you should gather necessary documentation as directed by SMILE. Proceeding the initial call, your Self Direction documentation will be reviewed to ensure candidate criteria are met.

STEP 5

PCHP MEETING

The Person Centered Housing Planning (PCHP) meeting will be set up and conducted by SMILE and Autism Communities staff. It is at this meeting where needs, wants and activities will be mapped out and a transition plan for living independently will be written. You may have as many individuals attend this meeting as desired. Following this meeting, SMILE will provide independent living recommendations.

STEP 6

BUDGET, HOUSING PREAPPROVAL AND BACKGROUND CHECK

Your Self Direction broker will assist you in any Self Direction budget adjustments as well as obtaining housing pre-approval through NY State OPWDD. Autism Communities will also conduct a background check of the candidate during this time, as required prior to residency. SMILE and Autism Communities will assist in preparing you/your loved one with connecting through multiple meetings.

STEP 7

PREPARE TO MOVE IN AND SIGN A LEASE

During this time period, Autism Communities will connect you with our housing liaison for an initial meeting and to establish goals for the upcoming year. Your circle will also prepare daily schedules, staffing (If applicable), and review resident responsibilities. Autism Communities will additionally aid in leasing paperwork and coordination.

STEP 8

MOVE IN!

Congratulations!

Autism Communities is committed to providing a welcoming and vibrant community!

