



STEP 1

ENROLL IN NYS OPWDD'S SELF DIRECTION PROGRAM

OPWDD's Self Direction program allows individuals to choose their services to best fit their needs. This includes housing, staffing and activities. You will attend a self-direction information session and then meet with your/your loved one's circle about budget and needs.

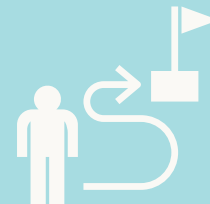


STEP 2

GATHER YOUR RESOURCES AND INFORM YOUR CIRCLE MEMBERS

Inform circle members about your interest in living independently and gather their contact information. This can include your/your loved one's:

- Self Direction Broker
- Care Manager
- Fiscal Intermediary
- Close Relatives/Friends



STEP 3

FILL OUT THE AUTISM COMMUNITIES INFORMATION FORM AND CONNECT

Our Information Form helps us gather basic information about your/your loved one's needs. Please review all of our candidate housing criteria before filling out the form. After filling out our information form, a member of the AC team will reach out to you directly. Attendance at Club AC events is highly encouraged during this time to meet other families and individuals involved with Autism Communities.



STEP 4

PREPARE TO CONNECT WITH SMILE & REVIEW OF SELF DIRECTION DOCUMENTATION

If Autism Communities determines you/your loved one is a potential housing candidate, you will be connected with SMILE. The SMILE & AC Team conduct all Autism Communities person centered housing planning meetings with candidates. You will take part in an initial Zoom call, and you should gather necessary documentation as directed by SMILE. Proceeding the initial call, your Self Direction documentation will be reviewed to ensure candidate criteria are met.



STEP 5

PCHP MEETING & RECOMMENDATIONS

The Person Centered Housing Planning (PCHP) meeting will be set up and conducted by the SMILE and AC team. It is at this meeting where needs, wants and activities will be mapped out and a transition plan for living independently will be written. You may have as many individuals attend this meeting as desired. A series of additional meetings may be held to ensure all necessary information is collected. Following this, SMILE will provide independent living recommendations. Your circle will review and sign off on both the PCHP narrative and recommendations.

STEP 6

BUDGET, HOUSING PREAPPROVAL, LOCATION DETERMINATION, AND BACKGROUND CHECK

Your Self Direction broker will assist you with any Self Direction budget adjustments, as well as obtaining housing pre-approval through NY State OPWDD. Autism Communities will also conduct a background check of the candidate during this time, as required prior to residency. The SMILE and AC Team will assist in preparing you/your loved one with connecting through multiple meetings and determining the best housing opportunity location based on individual needs.

STEP 7

PREPARE TO MOVE IN AND SIGN A LEASE

During this time period, Autism Communities will connect you with our housing liaison for an initial meeting and to establish goals for the upcoming year. An in person tour of the housing opportunity will also be conducted prior to move in. Your circle will also prepare daily schedules, staffing (If applicable), and review resident responsibilities. Autism Communities will additionally aid in leasing paperwork and coordination.



STEP 8

MOVE IN!

Congratulations!

Autism Communities is committed to providing a welcoming and vibrant community!

